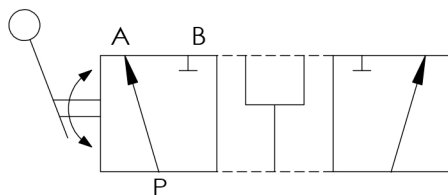
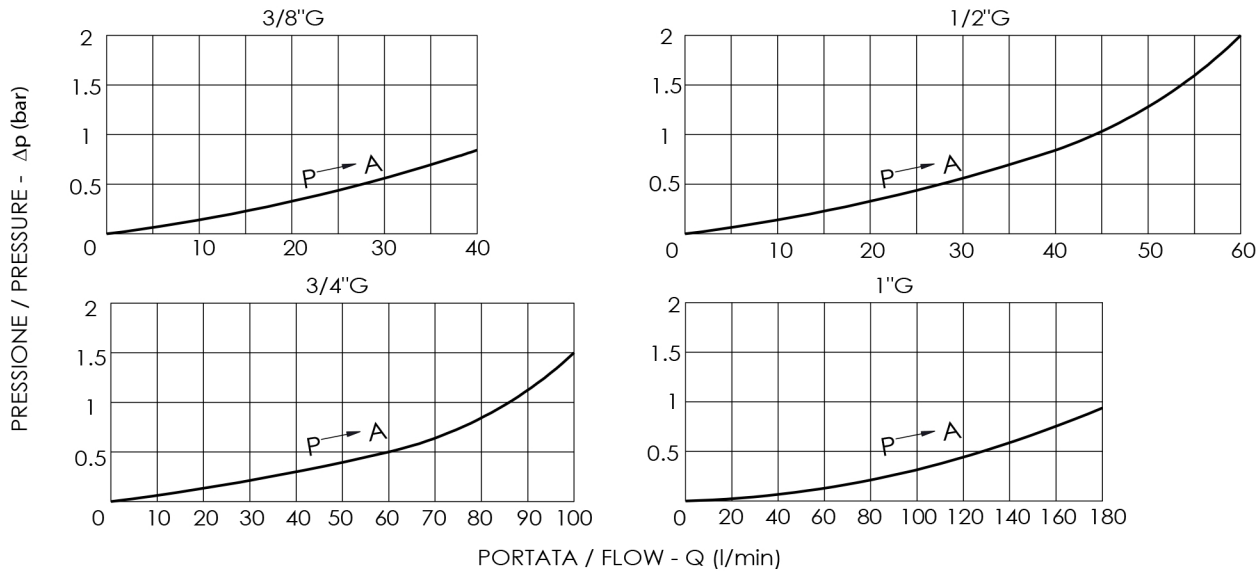


NOTE:
LA MISURA H E' RIFERITA A QUANDO
LA MANOPOLA E' A META' CORSA

H IS REFERRED TO THE LEVE IN
CENTER VERTICAL POSITION

124	80	24	32	40	40	15	50	3	125	80	40	16.25	14	ø11	1"G	1.55 Kg
124	80	24	32	40	40	15	50	3	118	80	40	16.25	14	ø11	3/4"G	1.6 Kg
124	60	14	32	30	30	15	50	3	108	60	28	13	9	ø11	1/2"G	0.65 Kg
124	60	17	26	30	30	15	50	3	107	60	28	13	9	ø8.5	3/8"G	0.7 Kg
L	L1	L2	L3	L4	L5	L6	L7	L8	H	H1	H2	H3	H4	D	Y	PESO/WEIGHT

CURVE CARATTERISTICHE / PERFORMANCE CURVES



DESCRIZIONE/DESIGN

Deviatore di flusso manuale a 3 vie con due posizioni di lavoro.

Manual flow diverter 3-way with two working position.

CODICE ORDINAZIONE ORDERING CODE	CAMPO DI PORTATA (l/min) FLOW RANGW (l/min)	PRESSIONE MAX (bar) MAX PRESSURE (bar)	Y
A150303.01.00	1-40	500	3/8"G
A150403.01.00	5-60	500	1/2"G
A150603.01.00	30-100	500	3/4"G
A150803.01.00	60-180	500	1"G