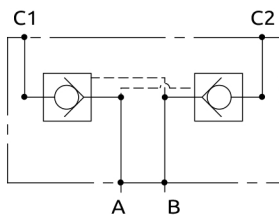
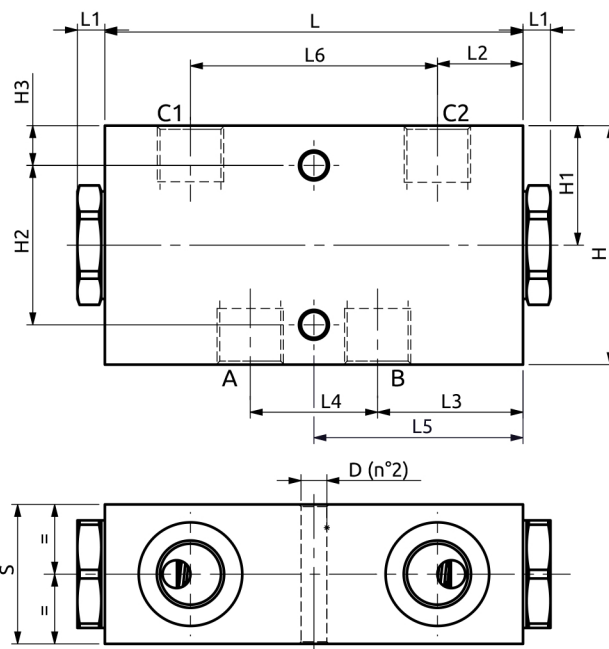
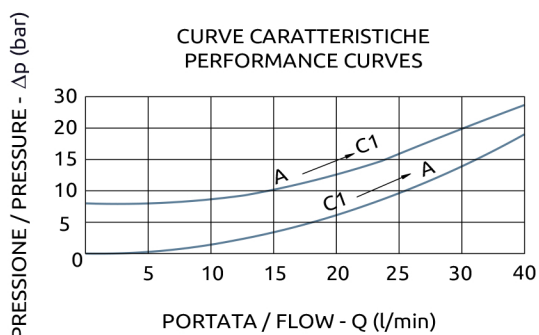




Valvola di blocco doppia pilotata Dual pilot operated check valve



CURVE CARATTERISTICHE
PERFORMANCE CURVES



*Corpo in alluminio / Aluminium body

| | | | | | | | | | | | | | |
|---------------|-----|----|------|------|----|------|----|----|----|----|----|----|------|
| A050351.04.00 | 100 | 7 | 19 | 33 | 34 | 50 | 62 | 30 | 60 | 30 | 40 | 10 | Ø6.5 |
| A050351.06.00 | 100 | 9 | 19 | 34 | 32 | 50 | 62 | 35 | 60 | 30 | 40 | 10 | Ø6.5 |
| B050351.02.00 | 105 | 7 | 21.5 | 36.5 | 32 | 52.5 | 62 | 35 | 60 | 30 | 40 | 10 | Ø6.5 |
| COD. | L | L1 | L2 | L3 | L4 | L5 | L6 | S | H | H1 | H2 | H3 | D |



DESCRIZIONE

Permette il flusso libero da A verso C1 e da B verso C2, mentre nelle direzioni inverse il flusso è pilotato. Idonea al sostentamento di un carico, non al controllo discesa.

DESCRIPTION

The valve allows free flow from A to C1 and from B to C2, whereas in the opposite directions the flow is piloted. Suitable to hold a load not to control a load lowering.

| Codice Ordine | Rapporto di Pilotaggio | Portata Massima | Pressione Max | Pressione di inizio apertura | Dimensione Porte | Peso |
|---------------|------------------------|-----------------|---------------|------------------------------|------------------|--------|
| Ordering Code | Pilot Ratio | Max Flow | Max Pressure | Cracking Pressure | Port Size | Weight |
| A050351.04.00 | 7.1:1 | 40 l/min | 400 bar | 8 bar | 3/8"G | 1.2 kg |
| A050351.06.00 | 7.1:1 | 40 l/min | 350 bar | 8 bar | 3/8"G | 0.7 kg |
| B050351.02.00 | 7.1:1 | 30 l/min | 350 bar | 4.5 bar | 3/8"G | 0.7 kg |