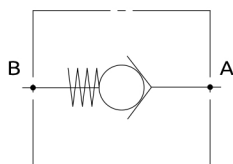
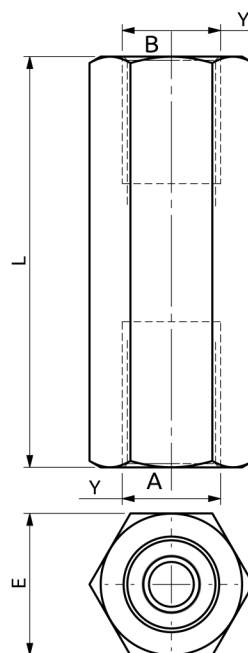
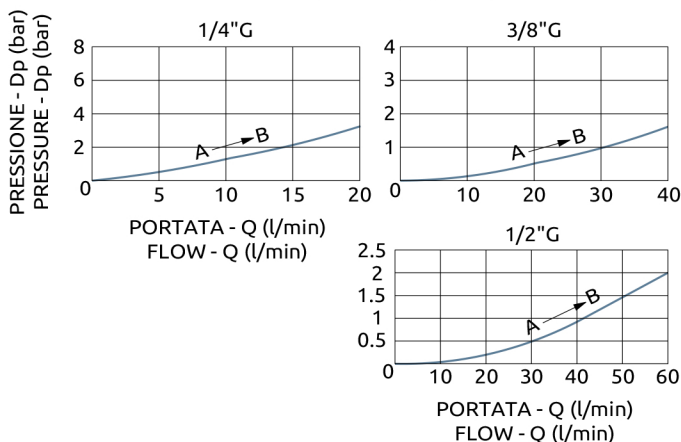




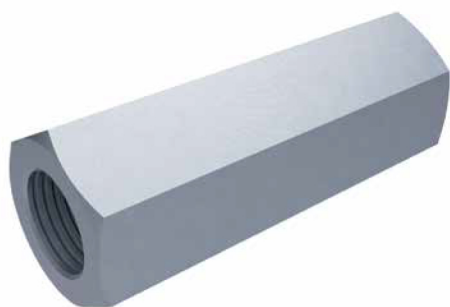
## Valvola unidirezionale Check valve



CURVE CARATTERISTICHE  
PERFORMANCE CURVES



65	HEX27	1/2" G
60	HEX24	3/8" G
55	HEX19	1/4" G
L	E	Y



## DESCRIZIONE

Sono valvole on/off che consentono flusso libero in un verso e lo bloccano nel verso contrario. Vengono realizzate in corpi esagonali in acciaio adatti ad essere montati in linea con i tubi. Sono disponibili con 3 diversi valori di taratura: 0.5 bar, 2 bar, 5 bar.

## DESCRIPTION

These valves allow free flow in a direction and stop it in the opposite direction. They are built in hexagonal bodies made of steel, suitable to be mounted in line with the hoses. They are available with 3 different setting values: 0.5 bar, 2 bar, 5 bar.

Codice Ordinazione	Taratura Standard	Portata Massima	Pressione Max	Dimensione Porte	Peso
Ordering Code	Standard Setting	Max Flow	Max Pressure	Port Size	Weight
A120200.01.00	0.5 bar	15 l/min	700 bar	1/4" G	0.1 kg
A120200.02.00	2 bar	15 l/min	700 bar	1/4" G	0.1 kg
A120200.03.00	5 bar	15 l/min	700 bar	1/4" G	0.1 kg
A120300.01.00	0.5 bar	35 l/min	700 bar	3/8" G	0.17 kg
A120300.02.00	2 bar	35 l/min	700 bar	3/8" G	0.17 kg
A120300.03.00	5 bar	35 l/min	700 bar	3/8" G	0.17 kg
A120400.01.00	0.5 bar	50 l/min	700 bar	1/2" G	0.25 kg
A120400.02.00	2 bar	50 l/min	700 bar	1/2" G	0.25 kg
A120400.03.00	5 bar	50 l/min	700 bar	1/2" G	0.25 kg