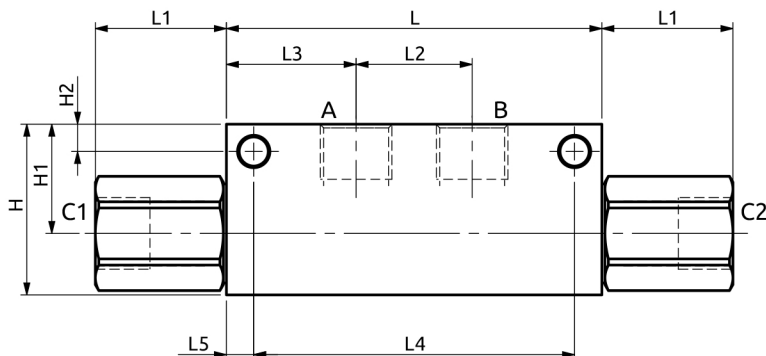
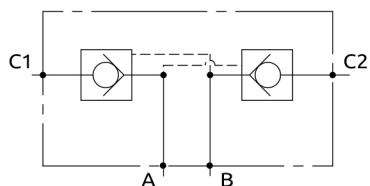


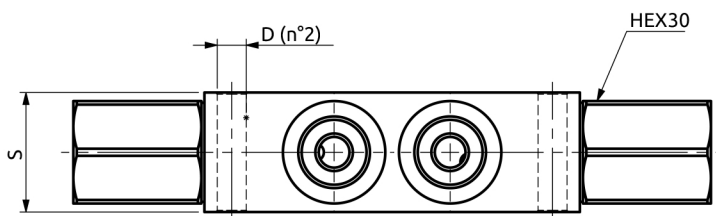
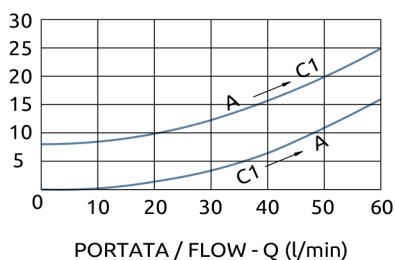


## Valvola di blocco doppia Dual check valves



PRESSIONE / PRESSURE -  $\Delta p$  (bar)

CURVE CARATTERISTICHE  
PERFORMANCE CURVES



Corpo in acciaio / Steel body

<b>A050453.03.00</b>	110	38.5	34	38	94	8	35	50	32	8	Ø8.5
<b>COD.</b>	L	L1	L2	L3	L4	L5	S	H	H1	H2	D



### DESCRIZIONE

Valvola di blocco doppia con otturatore a ventole apertura ON-OFF con uscite C1 e C2 in linea.

### DESCRIPTION

Dual check valves poppet type with ON-OFF opening, outlet C1 and C2 in line.

Codice Ordine	Rapporto di Pilotaggio	Portata Massima	Pressione Max	Pressione di inizio apertura	Dimensione Porte	Peso
Ordering Code	Pilot Ratio	Max Flow	Max Pressure	Cracking Pressure	Port Size	Weight
A050453.03.00	3.4:1	60 l/min	400 bar	8 bar	1/2"G	2.1 kg